

PROVIDENCE, R.I.
CITY ENGINEER'S OFFICE

STREET LINE DEPT.

Jan. 21, 1903.

031365

Note, The area abandoned is indicated
by the letters ABCD.

PLAT OF ARLINGTON AVENUE

FROM MORRIS AVE. TO ARLINGTON AVE. PROPER

SCALE 40 FEET PER INCH

ABANDONED AS A PUBLIC HIGHWAY,

BY RESOLUTION OF THE

BOARD OF ALDERMEN,

January 15, 1903.

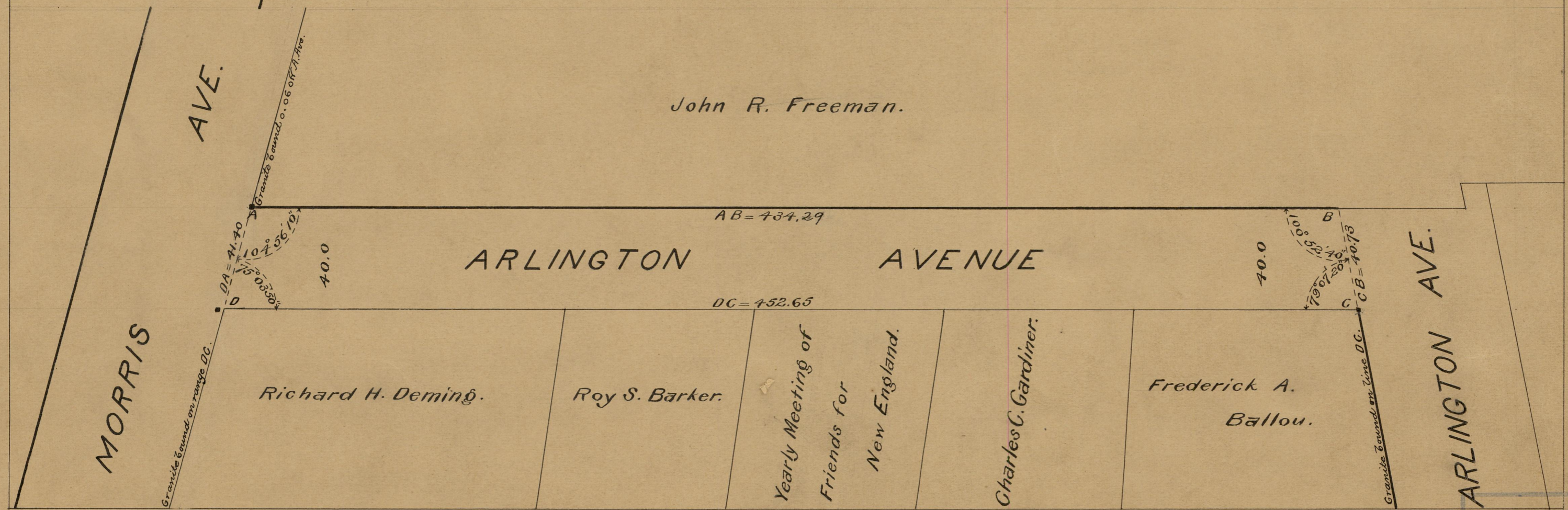
434.29
452.65

2 886.94
443.47

Witness, -----

City Clerk.

John R. Freeman.



OFFICE No. 14403
DRAWER 83
SHEET A-31